

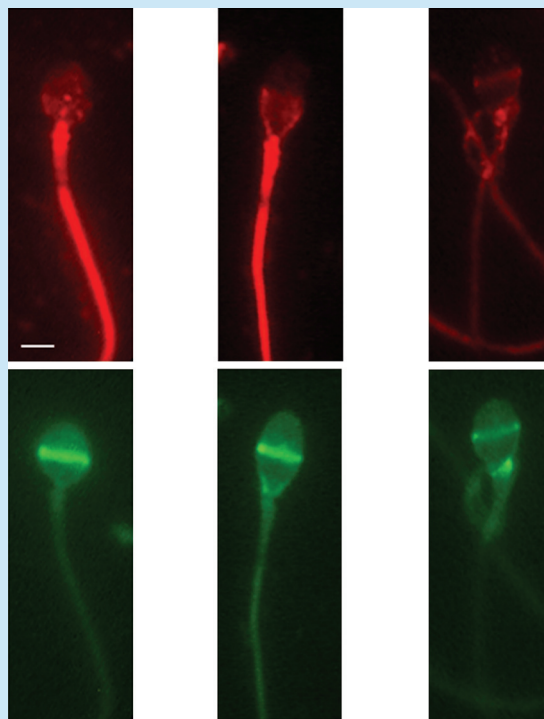
# MHR

Molecular Human Reproduction

## Basic science of reproductive medicine

Volume 14, Number 10, October 2008

[www.molehr.oxfordjournals.org](http://www.molehr.oxfordjournals.org)



OXFORD JOURNALS  
OXFORD UNIVERSITY PRESS



# M H R

Molecular Human Reproduction

## Basic Science of Reproductive Medicine

### Editor-in-Chief

S.G.Hillier

### Associate Editors

A.Ao, *Canada*  
J.D.Aplin, *UK*  
C.Barratt, *UK*  
D.Betts, *Canada*  
R.Canipari, *Italy*  
A.Cato, *Germany*  
N.Chegini, *USA*  
H.Critchley, *UK*  
S.K.Dey, *USA*  
C.Foresta, *Italy*  
B.M.Gadella, *Netherlands*  
B.Gellersen, *Germany*  
Y.Giwercman, *Sweden*  
R. Gruemmer, *Germany*  
J.A.Horcajadas, *Spain*  
M.R.Johnson, *UK*  
A.Jursicova, *Canada*  
B.Kalionis, *Carlton*

A.Kierszenbaum, *USA*  
K.E.Latham, *USA*  
J.Lim, *Korea*  
K.Liu, *Sweden*  
M.Maggi, *Italy*  
R.A.Nowak, *USA*  
A.Rajkovic, *USA*  
E.Rajpert-De Meyts, *Denmark*  
S.A.Robertson, *Australia*  
P.T.Saunders, *UK*  
S.Schlatt, *USA*  
E.Seli, *USA*  
J.F.Strauss, *USA*  
E.E.Telfer, *UK*  
J.Van Blerkom, *USA*  
P.E.Visconti, *USA*  
E.Winterhager, *Germany*

### Editor Emeritus

R.Ivell

### Managing Editor

H.K.Beard

Editorial Secretary: M.E.Gill

### Editorial Office

ESHRE Journals, 5 Mill Yard, Childerley, Cambs. CB23 8BA, UK

Tel: +44 (0)1954 212404; Fax: +44 (0)1954 212359; E-mail: editorial@humanreproduction.co.uk



Published for the  
European Society of Human Reproduction and Embryology  
by Oxford University Press,  
Oxford, UK



The cover image shows immunolocalization of E-cadherin and proteins of the adhesion complex in human spermatozoa. Distribution of E-cadherin immunostaining patterns in acrosome-reacted spermatozoa. Cells were stained with anti-E-cadherin antibody (H-108) and CY3-labeled secondary antibody followed by incubation with FITC-PSA to assess the acrosomal status. E-cadherin staining patterns: a signal over the entire head (H), in the post-acrosomal region (PA) or in the equatorial segment (ES). FITC-PSA staining patterns: a 'patchy' signal on the acrosomal cap (p), a label in the equatorial segment (es) or no label (nl),  $n = 5$ . Representative images of the H, PA and ES E-cadherin patterns in 'es' acrosome-reacted cells are shown. Bar: 2.5  $\mu$ m. (See Marín-Briggiler *et al.*, 561–571).

---

## SUBSCRIPTIONS

A subscription to *MHR-Basic Science of Reproductive Medicine* comprises twelve issues. All prices include postage and for subscribers outside the UK delivery is by Standard Air. *MHR-Basic Science of Reproductive Medicine Advance Access* contains papers that have reached corrected proof stage, but have not yet been included within an issue. Advance Access is updated weekly.

Annual Subscription Rate (Volume 14, twelve issues, 2008)

*Institutional*

Print edition and site-wide online access: £604/US\$1117/€906

Print edition only: £574/US\$1062/€861

Site-wide online access only: £574/US\$1062/€861

Please note: £ Sterling and Euro rates apply in Europe, US\$ elsewhere

There may be other subscription rates available, for a complete listing (including membership rates) please visit [www.molehr.oxfordjournals.org/subinfo](http://www.molehr.oxfordjournals.org/subinfo).

ESHRE. Application forms for ESHRE membership can be obtained from ESHRE Central Office, Meerstraat 60, 1852 Grimbergen (Belgium), Belgium. Tel: +32-(0)2-269 09 69, Fax: +32-(0)2-269 56 00, E-Mail: [bruno.vandeneede@eshre.com](mailto:bruno.vandeneede@eshre.com). Webaddress: <http://www.eshre.com>

Full prepayment, in the correct currency, is required for all orders. Orders are regarded as firm and payments are not refundable. Subscriptions are accepted and entered on a complete volume basis. Claims cannot be considered more than FOUR months after publication or date of order, whichever is later. All subscriptions in Canada are subject to GST. Subscriptions in the EU may be subject to European VAT. If registered, please supply details to avoid unnecessary charges. For subscriptions that include online versions, a proportion of the subscription price may be subject to UK VAT. Personal rate subscriptions are only available if payment is made by personal cheque or credit card and delivery is to a private address.

The current year and two previous years' issues are available from Oxford University Press. Previous volumes can be obtained from the Periodicals Service Company, 11 Main Street, Germantown, NY 12526, USA. Email: [psc@periodicals.com](mailto:psc@periodicals.com). Tel: +1 (518) 537 4700. Fax: +1 (518) 537 5899.

**For further information, please contact:** Journals Customer Service Department, Oxford University Press, Great Clarendon Street, Oxford OX2 6DP, UK. Email: [jnls.cust.serv@oxfordjournals.org](mailto:jnls.cust.serv@oxfordjournals.org). Tel (and answerphone outside normal working hours): +44 (0) 1865 353907. Fax +44 (0) 1865 353485. **In the US, please contact:** Journals Customer Service Department, Oxford University Press, 2001 Evans Road, Cary, NC 27513, USA. Email: [jnlorders@oxfordjournals.org](mailto:jnlorders@oxfordjournals.org). Tel (and answerphone outside normal working hours): 800 852 7323 (toll-free in USA/Canada). Fax: 919 677 1714. **In Japan, please contact:** Journals Customer Services, Oxford University Press, 1-1-17-5F, Mukogaoka, Bunkyo-ku, Tokyo, 113-0023, Japan. Email: [oupjnl@po.ijnet.or.jp](mailto:oupjnl@po.ijnet.or.jp). Tel: (03) 3813 1461. Fax (03) 3818 1522.

**Methods of payment.** Payment should be made: by cheque (to Oxford University Press, Cashiers office, Great Clarendon Street, Oxford, OX2 6DP, UK); by bank transfer [to Barclays Bank Plc, Oxford Office, Oxford (bank sort code 20-65-18) (UK); overseas only Swift code BARC GB22 (GB£ Sterling Account No. 70299332, IBAN GB89BARC20651870299332; US\$ Dollars Account No. 66014600, IBAN GB27BARC20651866014600; EU! EURO Account No. 78923655, IBAN GB16BARC20651878923655]; or by credit card (Mastercard, Visa, Switch or American Express).

*MHR-Basic Science of Reproductive Medicine* is published monthly (ISSN 1360-9947) by Oxford University Press, Oxford, UK. Annual subscription price is £604/US\$1117/€906. *MHR-Basic Science of Reproductive Medicine* is distributed by Mercury International, 365 Blair Road, Avenel, NJ 07001, USA. Periodicals postage paid at Rahway, NJ and at additional entry points.

US Postmaster: send address changes to *MHR-Basic Science of Reproductive Medicine*, c/o Mercury International, 365 Blair Road, Avenel, NJ 07001, USA.

### Instructions to Authors

For instructions on how to submit papers to *MHR-Basic Science of Reproductive Medicine*, please refer to the Journal's website at <http://www.molehr.oxfordjournals.org>.

### Supplements, reprints and corporate sales

For requests from industry and companies regarding supplements (ESHRE Monographs), bulk article reprints, sponsored subscriptions, translation opportunities for previously published material, and corporate online opportunities, please email [special.sales@oxfordjournals.org](mailto:special.sales@oxfordjournals.org), fax +44 (0)1865 353774 or visit [www.oxfordjournals.org/jnls/sales](http://www.oxfordjournals.org/jnls/sales).

### DOI's

For information about DOI's and how to resolve them, please visit <http://dx.doi.org/>

### Permissions

For information on how to request permissions to reproduce articles/ information from this journal, please visit [www.oxfordjournals.org/jnls/permissions](http://www.oxfordjournals.org/jnls/permissions).

### Advertising

Advertising, inserts and artwork enquires should be addressed to Advertising and Special Sales, Oxford Journals, Oxford University Press, Great Clarendon Street, Oxford OX2 6DP, UK. Tel: +44 (0) 1865 354767; Fax: +44 (0) 1865 353774; E-mail: [jnlsadvertising@oxfordjournals.org](mailto:jnlsadvertising@oxfordjournals.org).

### Material Disclaimer

The opinions expressed in *MHR-Basic Science of Reproductive Medicine* are those of the authors and contributors, and do not necessarily reflect those of the European Society of Human Reproduction and Embryology, the editors, the editorial board, Oxford University Press or the organization to which the authors are affiliated.

### Drug Disclaimer

The mention of trade names, commercial products or organizations, and the inclusion of advertisements in the journal does not imply endorsement by the European Society of Human Reproduction and Embryology, the editors, the editorial board, Oxford University Press or the organization to which the authors are affiliated. The editors and publishers have taken all reasonable precautions to verify drug names and doses, the results of experimental work and clinical findings published in the journal. The ultimate responsibility for the use and dosage of drugs mentioned in the Journal and in interpretation of published material lies with the medical practitioner, and the editors and publishers cannot accept liability for damages arising from any errors or omissions in the journal. Please inform the editors of any errors.

© European Society of Human Reproduction and Embryology 2008

All rights reserved; no part of this publication may be reproduced, stored in a retrieval system, or transmitted in any form or by any means, electronic, mechanical, photocopying, recording, or otherwise without prior written permission of the Publishers, or a licence permitting restricted copying issued in the UK by the Copyright Licensing Agency Ltd, 90 Tottenham Court Road, London W1P 9HE, or in the USA by the Copyright Clearance Center, 222 Rosewood Drive, Danvers, MA 01923. For those in the USA or Canada not registered with CCC, articles can be obtained by fax in 48 hours by calling: WISE for Medicine™ 1-800-667-WISE.

Typeset by Techset Composition Ltd., Salisbury, UK.  
Printed by C.O.S. Printers Pte Ltd, Singapore, on acid-free paper.